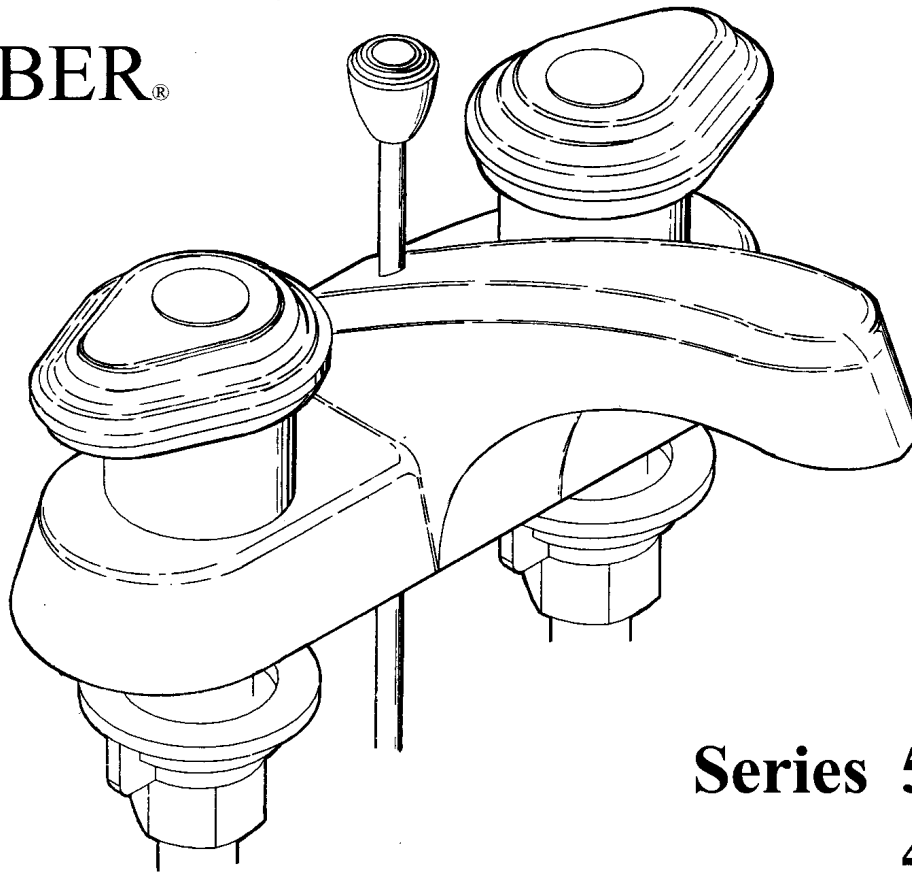


GERBER®



**Series 53-100
43-400**

DECORATIVE FINISHES:

The use of 100% non-abrasive wax, such as TURTLE WAX T-15 applied with a 100% cotton cloth, will clean and brighten the surfaces and provide protection for easier cleaning.

With proper care, your new GERBER product will give you years of trouble free service and enjoyment. Use only 100% cotton cloth dampened with water to clean.

DO NOT use detergents, cleaners or other abrasive materials as they may damage the finish and void the warranty.

MADE IN THE U.S.A.

ACABADOS DECORATIVOS:

El uso de ceras 100% no abrasivas, tal como la CERA DE TORTUGA T-15 aplicada con un paño de algodón, limpiará y dará brillo a las superficies y dará protección para que la limpieza sea más fácil.

Si le das el cuidado apropiado, tu nuevo producto GERBER te dará muchos años de servicio sin problemas. Limpialo solo con paños humedecidos que sean 100% de algodón.

NO usar detergentes, limpiadores u otros materiales abrasivos ya que pueden dañar el acabado y anular la garantía.

HECHO EN LOS ESTADOS UNIDOS DE AMERICA.

APPRET DÉCORATIF:

Pour un nettoyage facile et des surfaces qui brillent, appliquez, à l'aide d'un tissu 100% coton, une cire 100% non abrasive telle que la TURTLE WAX T-15. Cette cire assurera une protection qui facilitera le nettoyage. Avec les soins adéquats, votre nouveau produit GERBER ne vous causera aucun souci et vous donnera satisfaction pendant de nombreuses années. Pour le nettoyage, n'utiliser qu'un tissu 100% coton, légèrement humide.

NE PAS utiliser de détergents, de nettoyeurs ou autres matières abrasives car ces produits pourraient endommager le fini et annuler la garantie.

FABRIQUÉ AUX É.-U.

4" LAVATORY FITTING

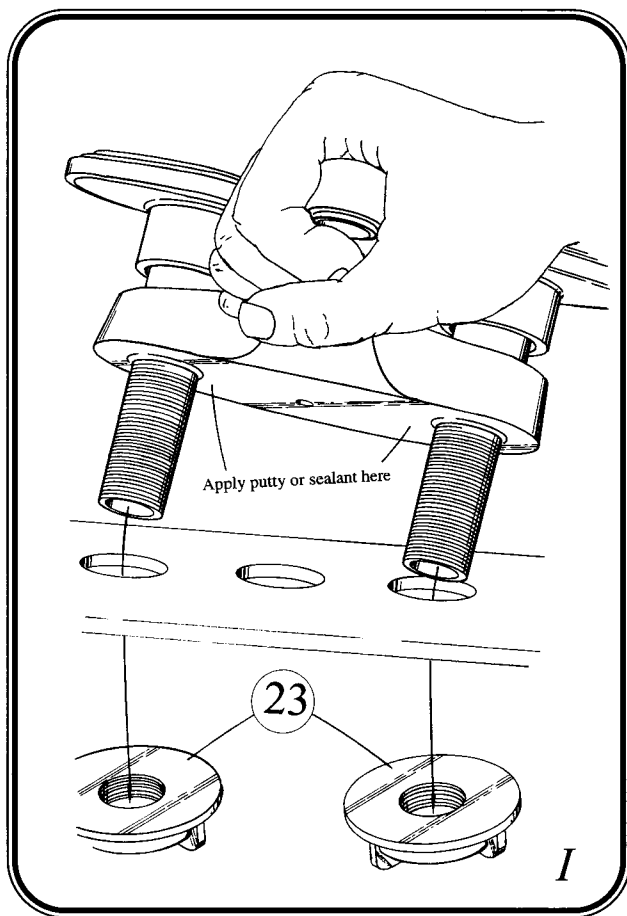
PREPARATION INSTRUCTIONS-

- Shut off water supply.
- If replacing an existing fixture, remove old fitting.
- Clean sink mounting surfaces for your new fitting.

CHECK CARTON FOR THE FOLLOWING-

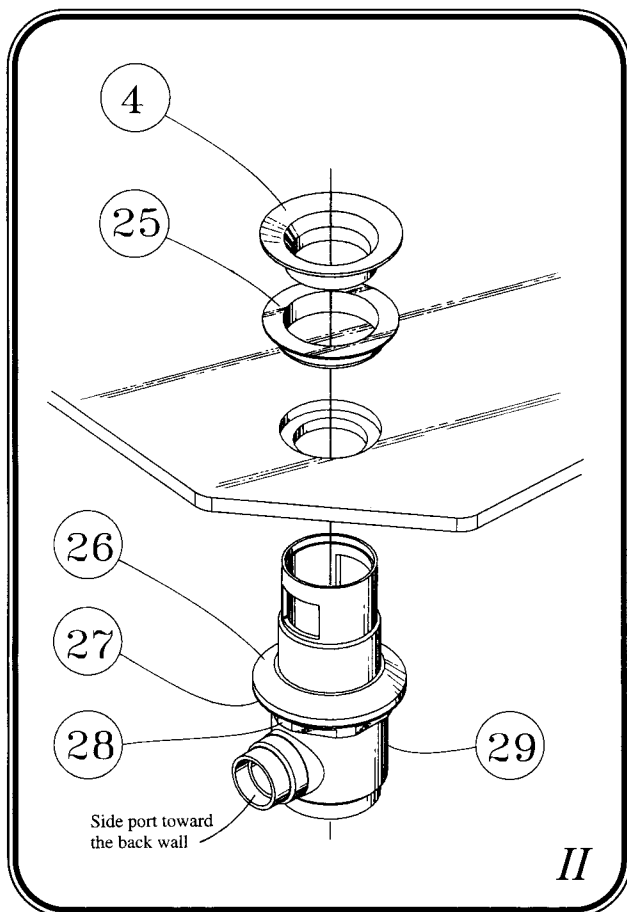
- A 4" lavatory faucet.
 - Plastic bag with 2 locknuts and 2 supply nuts.
 - A popup rod and extension assembly.
 - A drain (tee) assembly.
- } Faucets with
} Drains only

08-400B



(I) INSTALLING THE FAUCET:

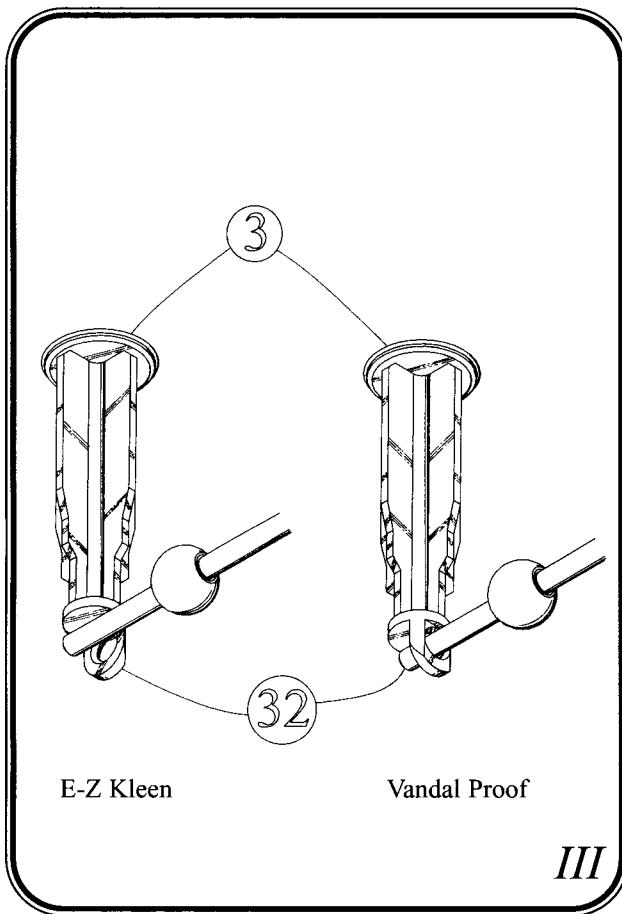
- Remove faucet body (1) from the carton.
- Apply putty or other sealant to the bottom surface of the fitting.
- Install faucet through the mounting holes.
- Finger tighten the synthetic locknuts (23) over the supply stems.
- Align faucet exactly as desired and securely tighten synthetic locknuts (23) by hand.
- Connect water supply using the supply nuts (24) supplied.
- Remove aerator (9) and flush both hot and cold water lines. Reinstall aerator and check for leaks at all fittings.



(II) INSTALLING THE DRAIN:

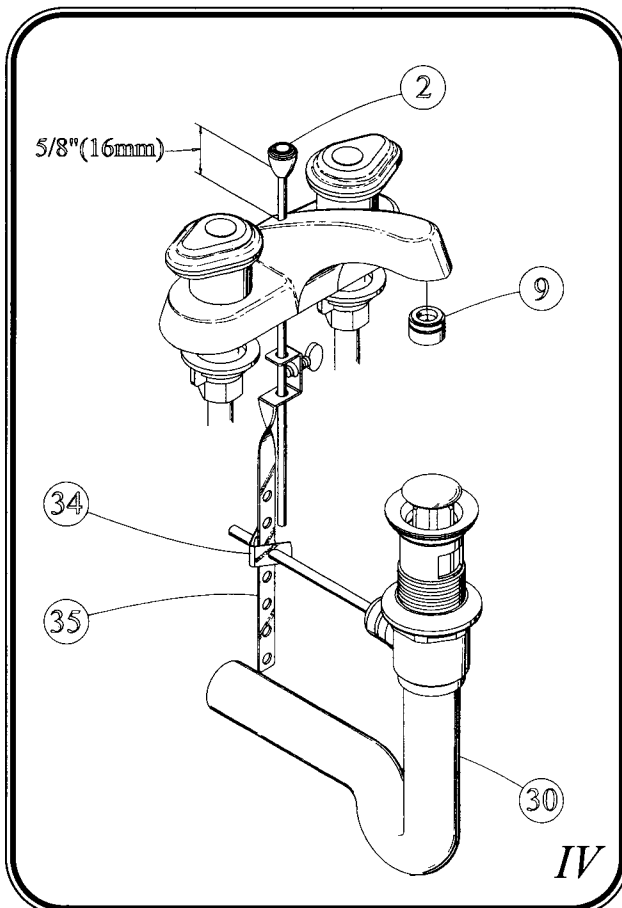
- Whether a new installation or replacing an existing drain, be certain that all mounting surfaces are clean and dry.
- For ***ABS drains! use NO*** oil base compounds !
- Unscrew flange (4) and remove washer (25) from drain assembly.
- If necessary, apply putty or sealant to bowl under the washer (25) to assure seal.
- With the nut (28), follower (27), and mac washer (26) at their lowest position on the threads, install through the bottom of the bowl and screw the top flange (4) into the drain body (29) until tight. If the drain has a pop-up (2), position the side port of the drain body toward the back wall.
- Secure the drain body (29) by advancing the nut (28), follower (27), and the mac washer (26) up the drain body (29) threads. Tighten until the top flange (4) is in close proximity to the lavatory. **DO NOT OVERTIGHTEN. OVERTIGHTENING MAY DAMAGE LAVATORY OR SEALS!**

(III) INSTALLING THE POP-UP:



- The plunger (3) may be installed in E-Z Kleen or Vandal Proof mode.
- For E-Z KLeen, install the plunger (3) after the ball & rod assembly (32) is installed and secured.
- For tamper resistant mode, insert plunger (3) into drain body assembly and insert the tip of the ball & rod assembly (32) through the loop on the end of the pop-up as shown.
- Place the ball rod washer (31) over the ball & rod assembly (32) and secure with the provided nut (33).
- Thread in the tailpiece (30).

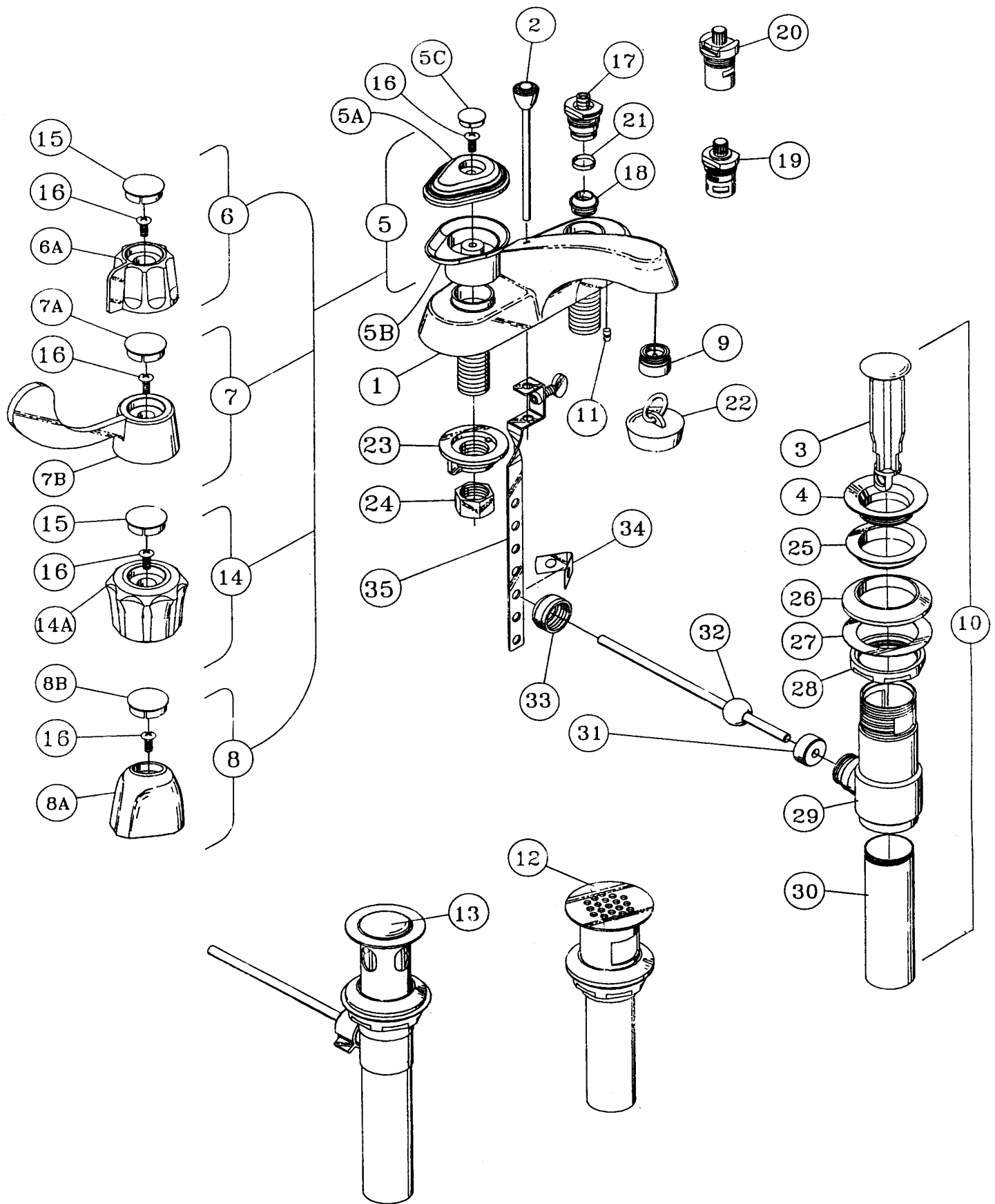
(IV) ADJUSTING THE POP-UP & DRAIN:



- After installing the ball & rod assembly (32), assemble the spring clevis (34), extension assembly (35), and the pop-up rod (2) as shown with the plunger open, adjust the components of the assembly so about 5/8" (16mm) of the pop-up rod (2) is visible between the faucet body and the pop-up knob.
- Insert tailpiece (30) into a P-trap/drain and secure with trap nut.
- Check for leaks at all fittings.



GERBER®
PROFESSIONALLY MADE, PROFESSIONALLY SOLD.
PROFESSIONALLY INSTALLED.
Gerber Plumbing Fixtures Corp.
4600 West Touhy Avenue, Lincolnwood, IL 60712-1699
(847) 675-6570



5	HARD WATER HANDLE- ASSEMBLY	91-930
5A	HARD WATER HANDLE- CAP	94-212
5B	HARD WATER HANDLE- BASE	94-210
5C	INDEX (BUTTON)	94-211
6	SMALL LEVER HANDLE ASY. (H&C)	98-904
6A	SMALL LEVER HANDLE ONLY	94-404
7	WRIST BLADE HANDLE- PAIR COMP.	98-879
7A	WRIST BLADE INDEX HOT	97-445
	WRIST BLADE INDEX COLD	97-446
7B	WRIST BLADE HANDLE ONLY	94-424
8	STANDARD HANDLE ASY.- HOT	97-908
	STANDARD HANDLE ASY.- COLD	97-909
8A	STANDARD HANDLE ONLY	94-250
8B	STANDARD INDEX BUTTON- HOT	94-251
	STANDARD INDEX BUTTON- COLD	94-252
9	AERATOR	
10	POP-UP DRAIN ASSEMBLY	97-773
11	CHAINSTAY	91-490
12	GRID STRAINER	43-970
13	50/50 POP-UP	43-969

UNFINISHED PARTS

14	CRYSTALITE HANDLE ASY.-HOT	98-425	22	STOPPER ASSEMBLY w/CHAIN	97-350
	CRYSTALITE HANDLE ASY.-COLD	98-426	23	SYNTHETIC LOCKNUT	91-631
14A	CRYSTALITE HANDLE ONLY	94-414	24	SUPPLY NUT	91-000
15	INDEX BUTTON- HOT	94-445	25	WASHER	90-874
	INDEX BUTTON- COLD	94-446	26	MAC WASHER	90-873
16	HANDLE SCREW	90-700	27	FOLLOWER	90-882
17	COMPRESSION VALVE- HOT	98-688	28	NUT	90-771
	COMPRESSION VALVE- COLD	98-689	29	DRAINBODY	
18	VALVE SEAT	90-161	30	TAILPIECE	90-782
19	WASHERLESS VALVE- HOT	98-710	31	WASHER, BALL ROD	90-832
	WASHERLESS VALVE- COLD	98-711	32	BALL AND ROD ASSEMBLY	97-730
20	CERAMAFLOW VALVE- HOT	86-987	33	NUT	90-833
	CERAMAFLOW VALVE- COLD	86-986	34	SPRING CLEVIS	90-809
21	SYNTHETIC WASHER	90-331	35	EXTENSION ASSEMBLY	97-340

WARRANTY

Gerber Plumbing Fixtures Corp.
Gerber Ceramic Disc Cartridge Ceramaflow Limited
Warranty
Gerber Washerless and Compression Type Cartridge Limited
Warranty

LIMITED LIFETIME WARRANTY

GPF warrants that the ceramic disc cartridge (the valve control of the faucet) will not leak or drip for as long as it is owned by the original purchaser. If the ceramic disc cartridge malfunctions or proves defective upon inspection by GPF after the valve has been returned, then GPF will repair or replace such part, at GPF's option, free of charge. This Limited Warranty only applies to repair or replacement of defective ceramic disc cartridges.

TEN (10) YEAR LIMITED WARRANTY

GPF warrants that the washerless or compression type cartridge (the valve control of the faucet) will not leak or drip for a period of ten (10) years from the date of original purchase, as shown on the original consumer-purchaser's receipt. If the washerless or compression type cartridge malfunctions or proves defective upon inspection by GPF after the valve has been returned, during the 10 year warranty period, then GPF will repair or replace such part, at GPF's option, free of charge.

This Ten (10) Year Limited Warranty only applies to repair or replacement of defective washerless or compression type cartridges. Normal wear of washers, seats, o-rings, sealants and lubricants is not subject to the 10 Year Warranty.

TWO (2) YEAR LIMITED WARRANTY ON OTHER PARTS

GPF warrants to the original consumer-purchaser of this product that for a period of two (2) years from the date of original purchase, this product will be free from defects in material and workmanship under normal, reasonable use in accordance with product instructions. All faucets installed in accepted commercial installations carry a one (1) year limited warranty. All labor, shipping, and freight costs and any other charges incidental to warranty and service are to be borne by the original consumer-purchaser.

GPF agrees, at GPF's option, to repair or replace this product or any part thereof which proves, upon inspection by GPF after such product is returned, to be defective in material or workmanship.

GPF will not be liable for any labor, shipping, freight, or any other charges incurred by the original consumer-purchaser in acting upon the above warranties. Installation or use of the faucet or valve not in accordance with product instructions or improper use, abuse or neglect of, or accident to, the faucet or valve will void the above warranties.

To receive replacement or repair of either the ceramic disc cartridge, washerless or compression type cartridge or another part of this product, send the defective part, together with the original sales receipt or a copy thereof, showing the date of purchase, to:

Gerber Plumbing Fixtures Corp.
4600 W. Touhy Ave.
Lincolnwood, IL 60712-1699
ATTN: Customer Service

If the Federal Consumer Product Warranties Act applies to the original purchaser of this product, then any implied warranties which may be applicable under state law, such as any implied warranty of merchantability or any implied warranty of fitness for a particular purpose, are limited with respect to the ceramic disc cartridge to twenty (20) years, washerless or compression type cartridge to ten (10) years and with respect to all other parts to two (2) years.

Other than as described above, GPF disclaims any and all other warranties, express or implied, including any warranties of merchantability or fitness for a particular purpose. In no event shall Gerber Plumbing Fixtures Corp. be liable to anyone for incidental or consequential damages.

The above warranties give you specific legal rights, and you may also have other rights which vary from state to state. Certain federal and state laws may limit or disallow disclaimers of incidental or consequential damages and/or limitations on implied warranties.

I) POUR INSTALLER LE ROBINET:

- Sortir le robinet (1) de l'emballage.
- Étendre du mastic ou autre potée sur le dessous du robinet.
- Glisser le robinet entre les trous de fixation.
- Serrer légèrement à la main les contre-écrous (23) sur les tuyaux du robinet
- Aligner le robinet à la position désiré et serrer complètement à la main les contre-écrous (23).
- Raccorder les tuyaux d'alimentation d'eau à l'aide des écrous fournis (24).
- Enlever l'aérateur (9) et faire couler l'eau chaude et l'eau froide. Remplacer l'aérateur et vérifier l'étanchéité de tous les joints.

(II) POUR INSTALLER LE DRAIN:

- Aussi bien pour une nouvelle installation que pour le remplacement du drain, s'assurer que toutes les surfaces soient propres et sèches.
- Ne jamais utiliser des composés à base d'huile pour des tuyaux en plastique (ABS).
- Si requis, dévisser le collet (4) et enlever la rondelle (25) de l'assemblage du drain.
- Si nécessaire, étendre du mastic ou de la potée sur le lavabo, sous le collet pour assurer l'étanchéité.
- Après avoir positionné l'écrou (28), la conduite (27) et la rondelle (26) le plus bas possible sur les filets, glisser le drain dans le trou au bas du lavabo and fixer le en position en serrant complètrnent le collet (4) avec le drain (29). Si le drain a un clapet escamotable, tourner l'ouverture du té du drain vers l'arrière.
- Pour compléter la fixation du drain, visser vers le haut l'écrou (28), la conduite (27) et la rondelle (26). Visser jusqu'à ce que le collet (4) soit très du lavabo. **NE PAS TROP SERRER:** Ceci pourrait endommager le lavabo ou affecter l'étanchéité de l'assemblage.

(III) POUR INSTALLER LE CLAPET ESCAMOTABLE:

- Le clapet (3) peut être installé de deux façons: pour faciliter le nettoyage (E-Z Kleen) ou pour être à l'épreuve du sabotage (Vandal proof).
- Installer la tige à rotule (31) dans l'ouverture du té du drain
- Pour le mode "E-Z Kleen", installer le clapet (3) après avoir mis en position et fixé en place l'assemblage de la tige à rotule (32).
- Pour le mode "Vandal proof", glisser le clapet (3) dans le drain et insérer le bout de l'assemblage de tige à rotule (32) dans le trou au bout du clapet tel que montré.
- Fixer le tout en place avec l'écrou (33).
- Visser le tuyau de raccordement (30) au bas du drain.

(IV) POUR ADJUSTER LE CLAPET ET LE DRAIN:

- Après avoir installé l'assemblage de la tige à rotule (32), assembler le crochet à ressort (34), la tige d'extension (35) et la tige escamotable de contrôlé du clapet (2) tel que montré.
- Avec le clapet ouvert, ajuster les différentes composante pour qu'il y un espace d'environ 5/8" (16mm) entre la tête de la tige et le robinet.
- Insérer le tuyau de raccordement (30) dans le syphon à sortie horizontale et fixer en place avec l'écrou du syphon.
- Vérifier partout l'étanchéité de l'installation.

SPANISH

(I) INSTALACION DEL GRIFO:

- Remover el grifo (1) del carton.
- Aplicar masilla u otro sellador a la parte inferior del grifo, que estara en contacto con la superficie.
- Pasar los tubos de suministro del grifo a traves de los hoyos de montaje.
- Meter las contratueras sinteticas (23) en los tubos de suministro del grifo y apretarlas con los dedos.
- Alinear el grifo exactamente como se desea y asegurarlo apretando las contratueras sinteticas (23) con las manos.
- Conectar el suministro de agua usando las tuercas (24) de coneccion que se proveen.
- Remover el aireador (9) y dejar correr los chorros de agua fria y caliente. Reinstalar el aireador y chequear que las conecciones no tengan fugas.

(II) INSTALACION DEL DRENAJE:

- Ya sea que se instale un drenaje nuevo o se reemplace uno ya existente, hay que asegurarse que todas las superficies del montaje esten limpias y secas.
- ¡En drenajes ABS, NO deben de usarse compuestos a base de aceites! Ipesatornillar el reborde (4) y remover la arandela (25) de la armazon del drenaje.
- Si es necesario, aplicar masilla o sellador al tazon debajo de la arandela (25) para ilsegurar la selladura.
- Con la tuerca (28), el seguidor (27) y la arandela mac (26) en la parte mas baja de la rosca, meter la parte superior del drenaje (29) por abajo del tazon y atornillar por arriba con el reborde (~) hasta que quede bien (29) apretado. Si el drenaje tiene un sistema de tapado (2), colocar la abertura lateral hacia la pared trasera.
- El bloque del drenaje (29) se asegura enroscando la tuerca (28), el seguidor (27) y el empaque mac (26) hacia arriba en la rosca de la pieza del drenaje. Apretar hasta que el reborde (4) este bien proximo al lavamanos. **NO APRETAR EXCESIVAMENTE. UN APRETAMIENTO EXCESIVO PUEDE DAÑAR EL LAVAMANOS O LAS SELLADURAS !**

(III) INSTALACION DEL SISTEMA DE TAPADO:

- El tapon (3) puede instalarse usando el modo Limpieza Facil (E-Z Kleen) o el modo A Prueba de Vandalismo (Vandal Proof).
- En el de Limpieza Facil, se coloca el tapon (3) despues que la varilla y la esfera (30) han sido propiamente instaladas.
- En el A Prueba de Vandalismo, se inserta el tapon (3) dentro de la armazon del drenaje y la punta del conjunto varilla-esfera (32) a traves de la abrazadera que esta al final del tapon, como se muestra en el diagrama.
- Colocar la arandela apropiada (31) en el conjunto varilla-esfera (32) y asegurarla con la tuerca (33) que se provee.
- Enroscar el tubo de desague (30) en la parte inferior de la armazon del drenaje.

(IV) AJUSTE DEL SISTEMA DE TAPADO Y DEL DRENAJE:

- Despues de instalar el conjunto varilla-esfera (32), se deben de ensamblar el resorte de abra~adera (34), la extension (35) y la varilla (2) del sistema de tapado, como se muestra en el diagrama. Con el tapon abierto, ajustar las partes del conjunto de tal manera que 5/8" (16 mm) de la varilla (2) del sistema de tapado sean visibles entre el grifo y el jalador de dicho sistema.
- Incertar el tubo de desague (30) en el sifon y asegurarlo con la tuerca del mismo.
- Quitar el aireador (9) y dejar correr los chorros de agua fria y caliente. Reinstalar el aireador (9) y chequear que no hayan fugas en ninguna de las conecciones.