

# GERBER®

PROFESSIONALLY MADE. PROFESSIONALLY SOLD.  
PROFESSIONALLY INSTALLED.™

---

## ULTRA FLUSH® TOILETS

---

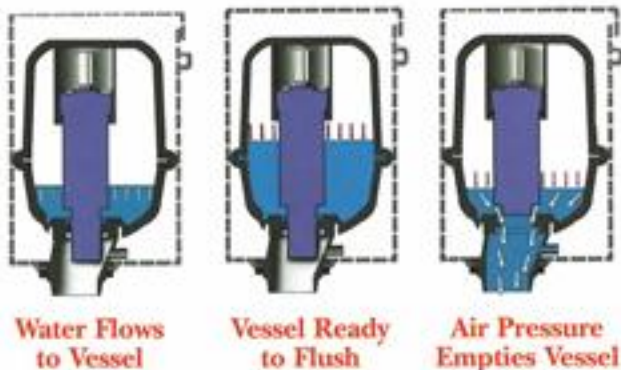
The Ultimate Flushing Solution  
Based on Independent Third-Party Testing



*featuring FLUSHMATE® III  
Pressure-Assist Operating System*

# HOW THE ULTRA FLUSH TOILET WORKS

The vessel traps air and as it fills with water, it uses the water supply line pressure to compress the trapped air inside. The compressed air is what forces the water into the bowl. So instead of the "pulling" or siphon action of a gravity unit, the pressure-assist unit "pushes" waste out. This vigorous flushing action cleans the bowl better than gravity units.



## FLUSHMATE® III

### Components List

#### 1. Lower Supply Group with Hose (#99-409)

- A. Supply Shank with Screen
- B. Pressure Regulator with Back Check (preset at 35 psi)
- C. Relief Valve (preset at 60 psi)

#### 2. Upper Supply Group (#99-408)

- D. Air Inducer
- E. Vacuum Breaker

#### 3. Flush Valve Cartridge Assembly (#99-403)

- F. Actuator with Setscrew

#### 4. Vessel (#99-413)

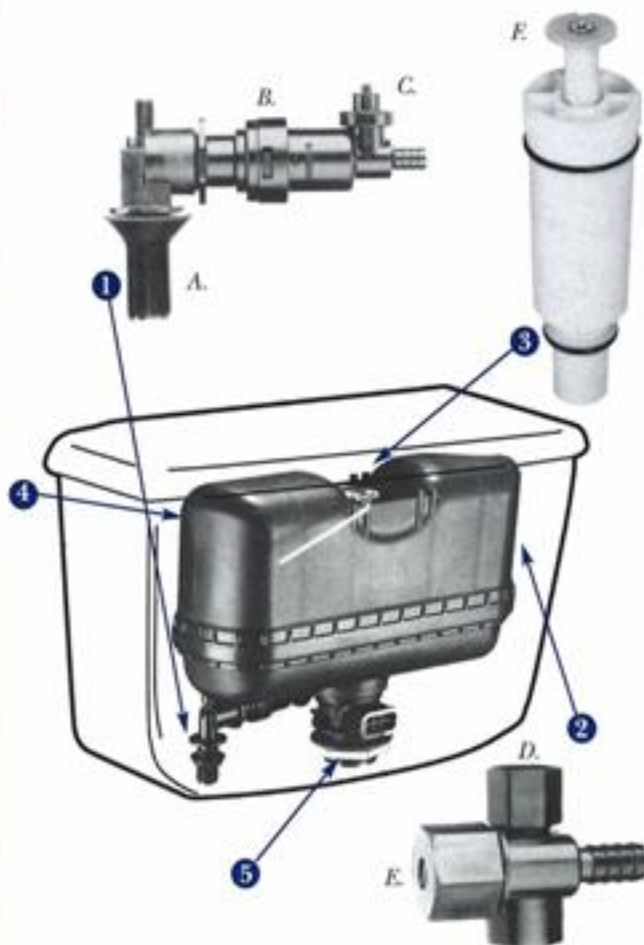
#### 5. Discharge Extension with Drain

#### Installation Requirement:

Recommended line pressure range of 20 to 125 psi. FLUSHMATE® is an integral part of a complete toilet and not suitable for retrofit applications.

#### Warranty:

All Ultra Flush toilets carry a five (5) year limited warranty.



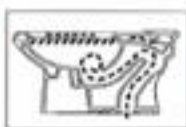
# HOW THE ULTRA FLUSH TOILET DELIVERS

## Superior Performance



- All Ultra Flush toilets are equipped with FLUSHMATE inside which utilizes pressure instead of gravity, creating a "push" to clear the bowl.
- Uses less than 1.6 gallons (6 liters) per flush without sacrificing performance.
- All Ultra Flush toilets carry a five (5) year limited warranty.

## Advanced Bowl Design



- The Ultra Flush bowl with jet is hydraulically designed to "push" contents out of trapway.
- This bowl in combination with FLUSHMATE force produces scrubbing action to help keep the bowl clean.
- The Ultra Flush toilets use a siphon jet bowl to meet and exceed ANSI/ASME A112.19.2M and CSA B-95 performance requirements.

## Largest Trapway



- The trapway expands to as much as 3" at key points to facilitate the removal of waste.
- Ultra Flush toilets have trapways that are specifically designed to allow waste to be extracted earlier in the flush.



- Pinus 2" (50.8 mm) ball.

## Largest Water Surface Area



114 sq. in.  
(290 cm<sup>2</sup>)

- The Ultra Flush toilet's large water surface (10" x 12" / 254mm x 305mm) provides for a cleaner bowl and better hygiene.

## Non-Sweating Tank



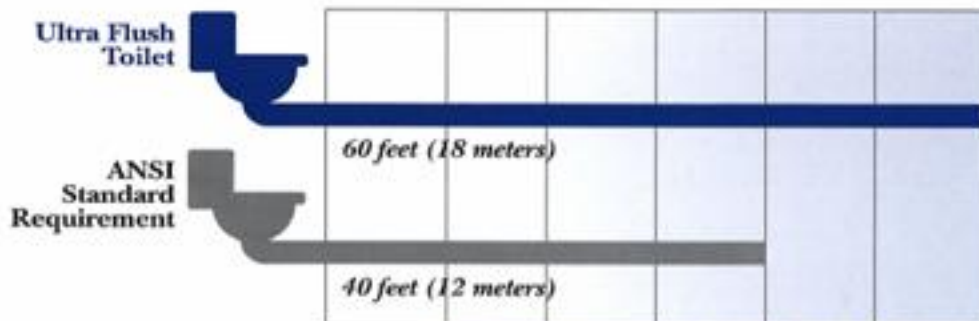
- Water is contained in the FLUSHMATE vessel. The result is a non-sweating toilet—so the floor around the toilet remains dry.

## Conventional Installation



- Installs in the same standard dimensional area as a conventional water closet. A minimum of 20 pounds-per-square-inch (1.38 kPa) water pressure is required.
- Ultra Flush toilets are available in 10", 12" and 14" rough-in, with left or right-hand flush handles.
- Choose from round front, elongated or 17" high elongated for full ADA compliance.
- Requires no special tools for installation.
- Fewer moving parts, so there's less chance for things to go wrong.

## SUPERIOR DRAINLINE CARRY PERFORMANCE



Average Consumption 1.6 gpf/6 lpf  
Tests conducted according to ANSI standard procedures.

# GERBER

## ULTRA FLUSH TOILETS

### ...The Ultimate Flushing Solution

*Where should you consider using Ultra Flush toilets?*

#### Commercial Applications

Commercial applications require above average demand and extraordinary performance. Public facilities are subject to user abuse and high traffic. With a heightened awareness of hygiene and performance by the general public, these demanding installations are even more challenging. Now that the federal law requires toilets to use 60% less water (1.6 gpf), commercial performance concerns are even more valid.

The solution to these demands is the performance of a commercial type flush valve. When a tank type toilet is required, the Ultra Flush toilet becomes that solution.

*"The Marriott Marquis installed 1,850 Floor-Mounted Back-Outlet Ultra Flush toilets in 1995. I observed that the total water consumption for the hotel was reduced by 14%, that the water bill was reduced by 18% and, most importantly, a reduction in the amount of labor necessary to service clogged and running toilets. I recommended the Gerber Ultra Flush toilets to other New York City Marriott properties. The thing about these energy saving projects is that we'll keep saving for years to come."*

— Ed Pietzok, Director of Engineering, New York Marriott Marquis

*"My previous experience was at an operation that had three and a half gallon gravity units, and we would get 10 calls a shift! Since the LUXOR opened in October of 1993, our plumbing calls have been minimal."*

— Johnny Place, Plumber, LUXOR Hotel

#### Residential Applications

Gerber's Ultra Flush toilets make commercial performance available in styles and colors suited for residential tastes. This includes the two-piece models in elongated and round front rim, and a 17" high model. Based on numerous user surveys and independent third party testing, the Gerber Ultra Flush toilet has been repeatedly ranked #1 in both performance and user satisfaction.

*"Blau Sudden Service Plumbing, Heating and Air Conditioning recommends Gerber's Ultra Flush Toilet with the FLUSHMATE® system because of the excellent performance it delivers on a consistent basis. Our service technicians are instructed to offer our customers the Ultra Flush toilets as the top of the line. It has the highest third party testing ratings that I could find. In addition, it is sold exclusively through traditional two-step distribution. That means that even though it is better than competitively priced, my customers don't see it at the home centers. It is truly the professional's product of choice."*

— Frank Blau, Blau Sudden Service Plumbing, Heating and Air Conditioning, Milwaukee, Wisconsin

Ultra Flush Toilets Have



Gerber Plumbing Fixtures LLC  
4600 W. Touhy Ave.  
Lincolnwood, IL 60712  
847-675-6570  
Fax: 800-5-GERBER  
[www.gerberonline.com](http://www.gerberonline.com)